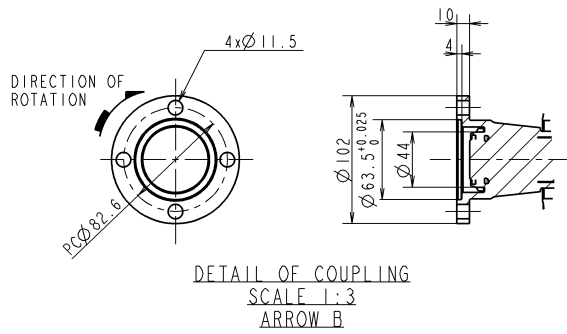
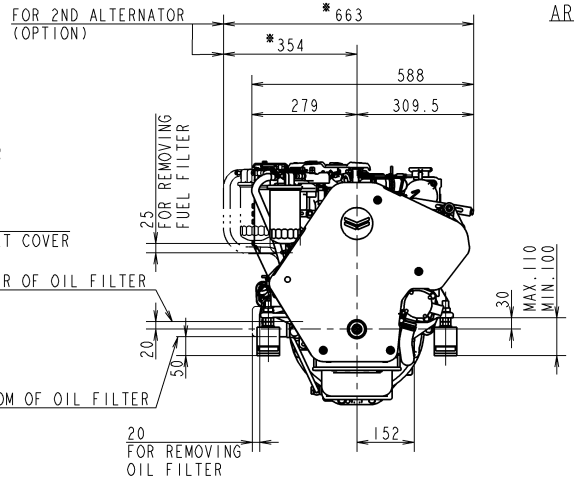
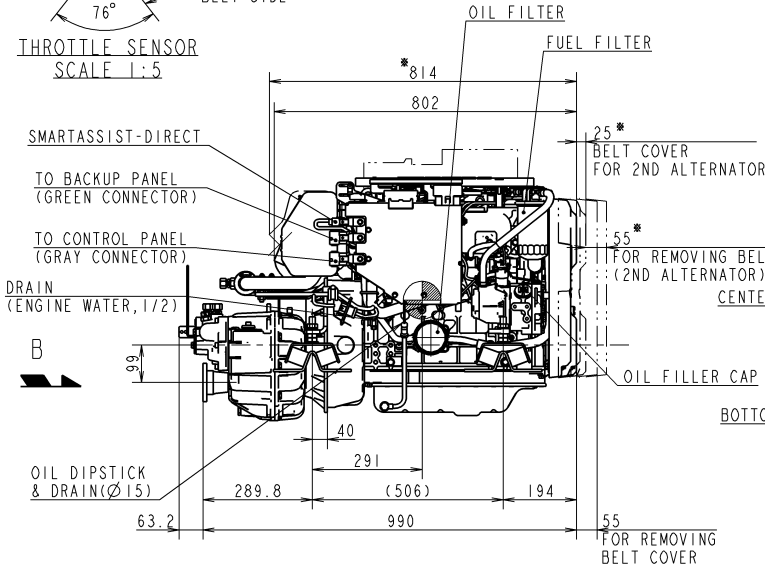
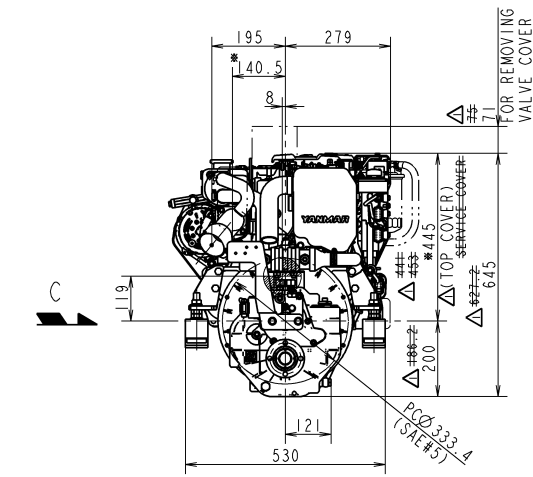
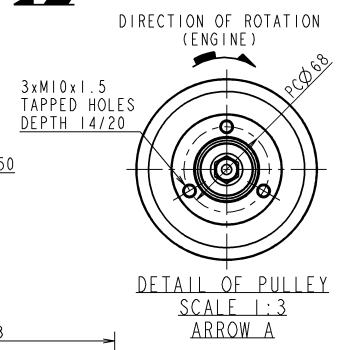
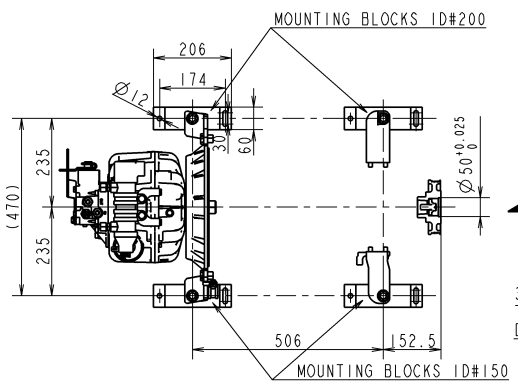
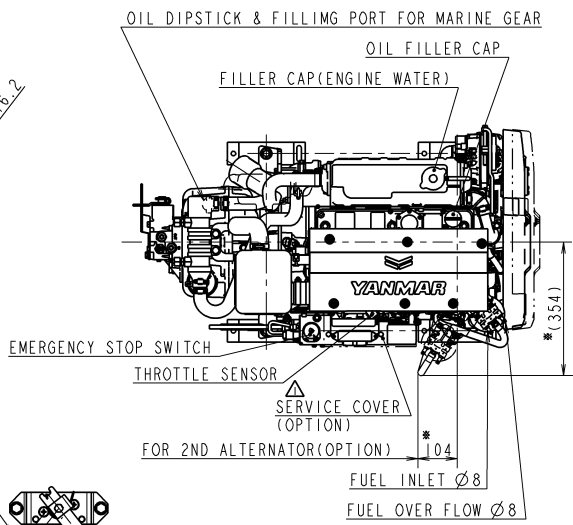
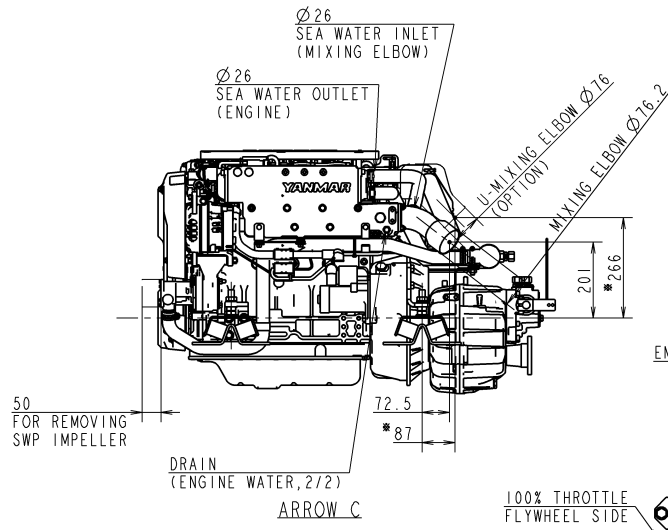


CAREER

(YDSBD-16002)  
REV.1(2018.3.20) CHANGE TOP COVER AND BELT COVER (YDSBD-18002)



NOTE  
1. MOUNTING BLOCKS ARE COMPRESSED ABOUT 4mm BY ENGINE WEIGHT.  
2. DIMENSIONS OF MOUNTING BLOCK IN THIS DRAWING ARE WITHOUT ANY DEFORMATION.  
3. THE FIGURES MARKED WITH \* SHOW THE DIMENSIONS WITH U-MIXING ELBOW OR OPTIONAL PARTS.  
4. ● SHOWS THE CENTER OF GRAVITY.

SPECIFICATIONS		
Model	4JH57	4JH45
Continuous Power (ISO 8665)	kW/min <sup>-1</sup> 38.1 / 2907 30.1 / 2907	
Fuel Stop Power	Propeller shaft (ISO 8665)	kW/min <sup>-1</sup> --- ---
	Crankshaft (ISO 8665)	kW/min <sup>-1</sup> 41.9 / 3000 33.1 / 3000
Reduction ratio	1.97   2.80 ---   1.97   2.80 ---	
Dry mass	kg Approx. 253	
Direction of rotation at output coupling (Forward)	clockwise	

SEC. MANAGER 北本		MODEL	4JH57	4JH45	SCALE	1:10
CHECKED	SPECIALIST	QTY	-	-	MATERIAL	
DESIGNED	DRAWN	DATE: Y.M.D	NAME			
K. Shiga	F. Kishida	2017.2.27	4JH57-ZF25-M-SHIFT			
			CODE	B2-29675-0090	REV. 1	DRAWN SIZE A2
YANMAR CO., LTD. DEVELOPMENT DIV.						