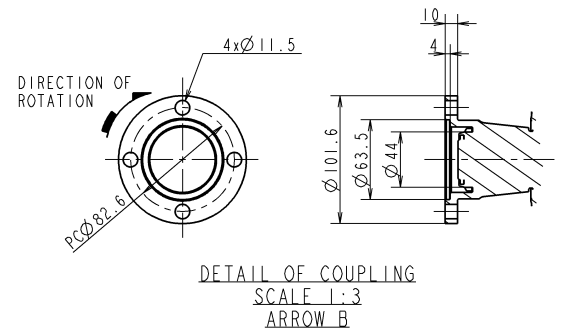
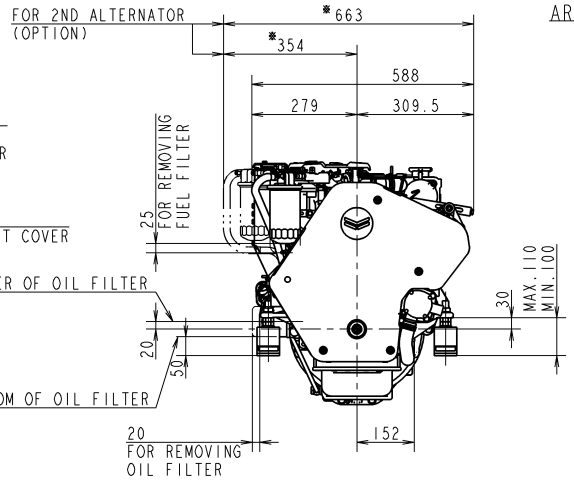
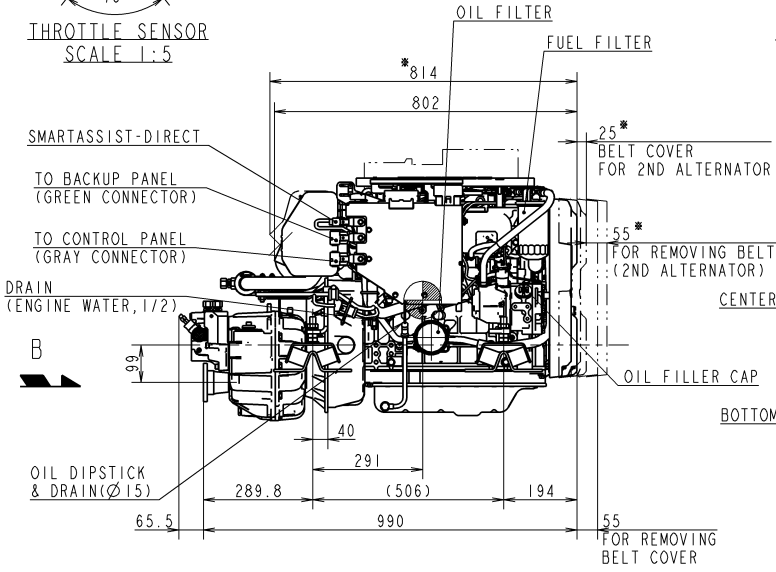
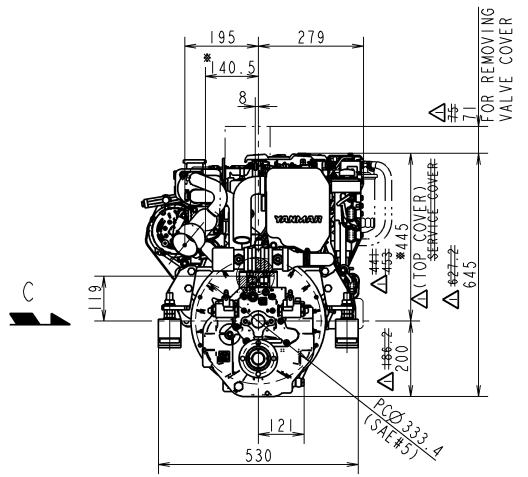
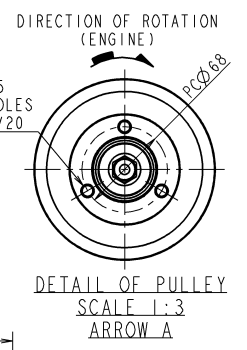
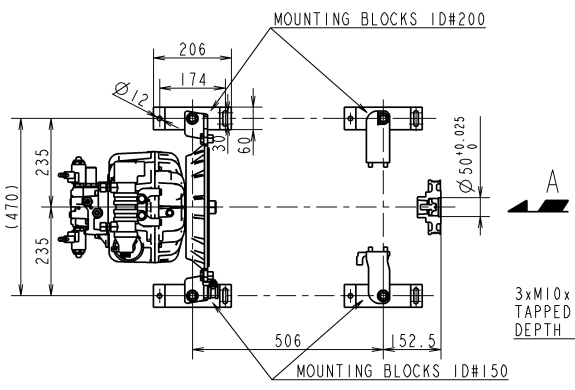
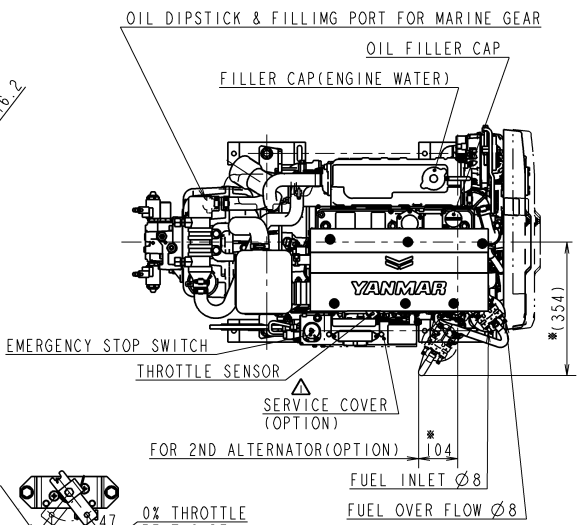
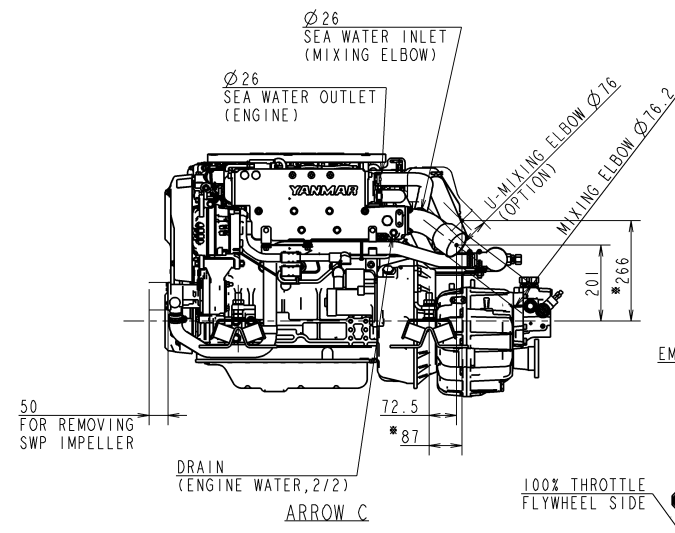


CAREER

(YDSBD-16002)
REV.1(2018.3.20) CHANGE TOP COVER AND BELT COVER (YDSBD-18002)



NOTE
1. MOUNTING BLOCKS ARE COMPRESSED ABOUT 4mm BY ENGINE WEIGHT.
2. DIMENSIONS OF MOUNTING BLOCK IN THIS DRAWING ARE WITHOUT ANY DEFORMATION.
3. THE FIGURES MARKED WITH * SHOW THE DIMENSIONS WITH U-MIXING ELBOW OR OPTIONAL PARTS.
4. ● SHOWS THE CENTER OF GRAVITY.

SPECIFICATIONS		
Model	4JH57	4JH45
Continuous Power (ISO 8665)	kW/min ⁻¹ 38.1 / 2907 30.1 / 2907	
Fuel Stop Power	Propeller shaft (ISO 8665)	kW/min ⁻¹ --- ---
	Crankshaft (ISO 8665)	kW/min ⁻¹ 41.9 / 3000 33.1 / 3000
Reduction ratio	1.97 2.80 --- 1.97 2.80 ---	
Dry mass	kg Approx. 243	
Direction of rotation at output coupling (Forward)	clockwise	

SEC. MANAGER 吉崎		MODEL 4JH 57 4JH 45		SCALE 1:10	
CHECKED 北本		SPECIALIST		MATERIAL	
DESIGNED K. Shiga		DRAWN F. Kishida		DATE: Y.M.D 2017.2.27	
NAME 4JH57-ZF25-E-SHIFT					
				CODE B2-29675-0100	DRAWN SIZE A2

MANAGER
山口